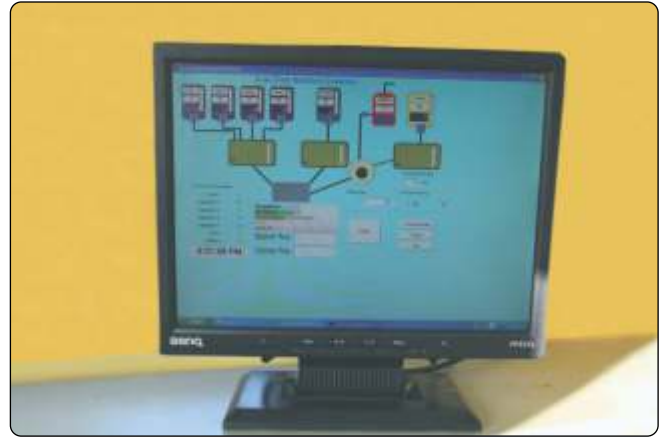


Compact Concrete Batching Plant with PAN Mixer



**Model: CP 25 PAN PL
CP 30 PAN TML**

- BHAi PAN Mixer
- Fully automatic batch control system
- Completely pre-wired & pre-assembled
- Easy, compact & simple to operate



CONTROL PANEL

The Control Panel offered is very modern, compact and reliable with all the operations controlled through microprocessor based control panel. Any number of recipes can be stored in the panel and operator only has to choose at time of running the plant.

The plant can be run on fully automatic mode or semi automatic or manual mode.

The control panel has recording facilities provided for every batch and the batch data be stored on control panel itself and also on computer. Scada based interface can also be provided at extra cost depending on the requirement of customer.



Technical Specifications:

Capacity	25 cum/hr	30 cum/hr
Mixer type	PAN	PAN
Mixer Capacity (ltr.)	375	500
Mixer Motor (HP)	1 X 20	1 X 25
Gate Power Pack Motor (HP)	2	2
No. of Aggregate Compartment (No.)	4	4
Capacity of Storage Hopper (M ³)	12	20
Aggregate Conveyor Motor (HP)	15	15
Discharge height (mtrs)	1.6	4
Control Panel	Fully automatic with print out	Fully automatic with print out

In accordance with its policy of constant product development, BHA I reserves the right to change the specifications without any prior notification. All dimensions and capacities quoted are nominal. Accessories shown are not a part of the supply.

MANUFACTURING UNIT:
BHAI PUMPCRETE (P) LTD.
 VPO, BUDHEWAL,
 CHANDIGARH ROAD,
 LUDHIANA – 141 112

BHAI
KWIK MIX

SALES & SERVICE:
BHAI PUMPCRETE (P) LTD.
 B II/3, Mohan Cooperative Industrial Estate,
 Badarpur, New Delhi - 110 044
 Tel: +91-11-40505998
 E-mail: sales@bhai.co.in